

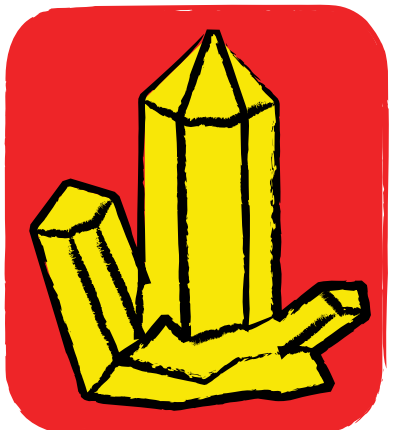
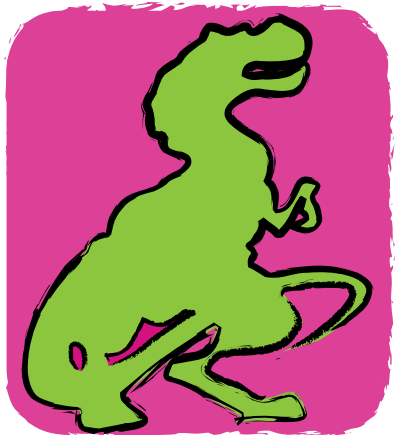


ROCKtoberfest!

a celebration of everything mineral

Oct. 29 & 30 Port Moody

Local Rockhounds Show Off



The Port Moody Rock & Gem Club is pleased to announce our annual show coming up on October 29th and 30th - Saturday and Sunday from 10am to 5pm both days. See back page for details.

The overall theme of celebrating everything mineral runs the gamut of what our club members love about our hobby. Its surprising what it covers; rockhunting and collecting to artistic creations including jewellery design, carving and building. We have people who dabble and others who are down-right serious. Ages include youngsters, families and retired people; all who have discovered some aspect of mineral-love.

What can you expect at our show? Three rooms of wonders. One is filled with display cases where you can see some of the treasured items collected and created by our members over the years.

The two dealers' rooms contain long tables of stones and gems from around the world including rough, slabs and cabochons. There will be amazing crystals, fossilized remains of long-gone creatures and pretty stone beads in many colours. If you are creative, you will find inspiring materials to work with. Its also a great opportunity to start your Christmas shopping with racks and racks of handcrafted jewellery designs at various price points.

There's plenty for the kids too, as we the popular Spin & Win game where everyone is a winner as well as Grab Bags with special treasures inside.

Our Members Boutique has been expanded, featuring jewellery, objects d'art, books and slabs.

We will also have a food concession area, a place to lounge and many people who will be very glad to help you identify any mystery rocks you have or inform you about our club and hobby.

Its two days of rock-talk and surprises of Mother Nature's wonderful treasures.

Members: Please check page 3 for show news.

Another Creative Idea From One of Our Members



Shirley Edwards has taken two craft disciplines and integrated them into one beautiful piece. Agate slabs are combined with natural crystal and stained glass to create a stunning decoration. Shirley will have a couple of these on display at her table at the upcoming show.

Month-long Club Display at Port Moody Library



The Port Moody Library has once again let our rock club display for the month of October. This year, the display shows different aspects of rockhunting and the lapidary arts. Contributors include Geoff Cameron (faceting), Shirley Edwards (carving), Lynne Johnston (rockhunting) and Rose Kapp filling in the blanks.

Come by and take a look. And thanks again to the Library for this opportunity to showcase our hobby and promote the show.

www.portmoodyrockclub.com

The Planet Earth Post is published 4 times per year by the Port Moody Rock & Gem Club.

President: Lisa Elser

Vice president: Lisete Cerqueira

Secretary: Edit Simon

Treasurer: Marlene Flanagan

Membership: Sonja Stubbings

Workshop: Geoff Cameron, Bo Pacholok, Tom Schlegel, Richard Wile

Newsletter: Rose Kapp

Society Delegates: Gary Richards (Sr.),

Lisa Elser (Int.), Ken Ayres (Jr.)

Workshop Schedule September to June. Please check with the Kyle Centre for other months.

Monday: 9:00 am - 12 noon

Tuesday night: 7:00 pm - 9:00 pm

Thursday: 9:00 am - 12 noon

Friday night (temp): 7:00 pm - 9:45 pm

General Meetings are held in the Arts Centre on St. Johns St., Port Moody, at 7 PM. (Sept-June)

For Field Trips, Rock Shows and special events in British Columbia, please check the BC Society website: www.lapidary.bc.ca

Planet Earth Post Advertising

The Planet Earth Post is accepting advertising. The quarterly publication of the Port Moody Rock and Gem Club contains articles about club activities, lapidary news and tips, geological and other earth science articles.

Our full colour newsletter is available online through the club website. We have over 250 people on our contact list.

Edition and Distribution Dates:

Winter - early January

Spring - late March (Society Show edition)

Summer - early July

Fall - early October (PMRC Show edition)

Contact Rose Kapp (editor) if you wish to receive a rate card or to place an ad.

ph: 604-941-3023 • email: roszay@shaw.ca

2011-12 Club Membership

Membership fees for the term of Sept. 1, 2011 - Aug. 30, 2012 are due in September. Single membership is \$25. Family memberships are \$45 (for an immediate family of up to two adults). For family memberships including more than two adults, additional adults will need to pay the \$25 individual rate.

Please Note: Memberships must be in by November 1st, 2011 for individuals to have the right to use the workshop.

Membership fees can be submitted at our next general meeting, workshop or mailed to the club at: Port Moody Rock & Gem Club, c/o Kyle Centre, 125 Kyle St., Port Moody, BC, V3H 2N6

Editor's Notes

Oh dear, I have long fingernails again! This must mean I haven't been busy at the grinding wheels. Yes, I've been busy doing other things, like putting together this newsletter, the library display and planning the upcoming show. The fun stuff has to wait for a while.

How does one person do all this and still maintain a family life, work and keep friendships? It isn't one person; it's a team of people. Simply put, if it was just me, these things wouldn't happen.

When someone comes across an article to share or contributes info for the newsletter, I rejoice. When club members bring in items and help haul it into the library, it all adds up into an interesting display for the public. And there's nothing more feel-good than a whole group pulling together to put on a great show. Yes, there's squabbling, short tempers and the occasional swear word, but there's also a lot of joking around and laughter.

That's how a club works. Sure, sometimes it's a select few who do the majority

of the work. This can cause issues and burn out. It's a point that has to be mentioned again and again because if we don't pull together, it all falls apart.

Enough of the whinging (a British term combining whining and complaining). It's time to get busy, volunteer and get ready because even though it's a month away, the show will be here before you know it.

I'm looking forward to the annual crazy time and hope we get a thousand people or more during the two days. Remember, all profits go towards running our club and workshop (the wheels don't last forever). We all benefit from a healthy club attitude so we all have to contribute our efforts and time. So get out there and promote the show. Handbills are available at the workshop.

Please note: Club dues are, well, due. Memberships must be in by November 1st, 2011 for individuals to have the right to use the rock workshop. Please check the workshop column for new guidelines for use and notices.

Rose Kapp, editor ■

Smile Time



POLISHING CONSUMABLES
FOR FACETERS

BETA DIAMOND PRODUCTS, INC.
TEL: (714) 777-7144 www.betadiamond.com FAX: (714) 695-9351

Club News

Workshop News

- The workshop is back to being open on Tuesday nights from 7pm - 9pm. The popularity of the Friday night workshop means that we will be continuing as long as we have a supervisor and enough people coming down. Stay tuned.
- Water levels on the grinders, especially the wide wheels, should be level with the top of the bubblers. Water temperature should be lukewarm. Hot water is your enemy because it can increase the chance of overheating and cracking your cab.
- Please have your membership fees paid by November 1, 2011, so your access to the workshop is current. Anyone not paid up will not be able to use the equipment.
- At the September meeting, it was moved and voted that the policy of free first cuts of rough be dropped. Any rock cut/slabbed must be paid for. The rate is 15¢ per square inch. Please don't use the trim saws for cutting rough. It isn't meant for that type of abuse and those doing so will be asked to stop.
- Safety courses for the workshop will soon be implemented for everyone on an annual basis. This is for everyone's benefit. Watch for them soon.
- Equipment usage course will be run in the near future. All new members must be taught on the care of the machines and sign a waiver.
- Please help others in the care of the equipment and remember the supervisors are there to keep the workshop safe and running for everyone's benefit. They are volunteers and using their own time. They have the authority to ask you to leave if you are abusing the equipment or causing a disruption. Remember, if we don't have willing supervisors, the shop hours will be trimmed.

Show News

- Show handbills and posters are available in the workshop. Please promote the show. If you know of a place to display or handout show info, please do so. If you need any more handouts, let Rose know.
- **Displays:** The display room will be handled by Andrew. If you wish to have a display case or to share, let him know. Email: andrew@atotation.com
- **Volunteers:** Club members need to volunteer to remain a member of good standing. Please contact Margaret Whyte: nutmeg489@telus.net. We don't want you stuck in one place for the whole show, so Margaret has arranged for only 2 hour slots. Set-up, take-down, kitchen, front door and other areas still need help.

- **Member Boutique:** There still seems to be some confusion about what the boutique is. First of all, it's a way for members who don't have enough items for sale or don't want to man their own table to actually have their pieces available for sale. Only 10% of these proceeds go to the club. This also allows club members to volunteer in other sections of the show and to allow them to view the show.

Lynne is the person in charge. Please contact her if you wish to put items in the boutique or have questions.

There are many boutique items that have been created or donated to the club such as shop aprons, vintage jewellery and kids items. Also available, are some of the donated material from Rose's father's collection. It's a great opportunity to find some new rough and slabs. All proceeds will go to the club.

- Rose is planning the club case. Called "**Go Big or Go Home**", it will feature oversized statement jewellery. If you have a massive ring, bracelet or necklace you would like to display, contact Rose: roszay@shaw.ca

- Display cases will be brought up at the beginning of the week and built during the Thurs. workshop (Oct 27). Fri. night, the Lounge room and the Display room are set up. The main room set-up starts at 7am on the Sat. morning. Most dealers will arrive around 8am. Doors open to the public at 10am.

- **Demonstrations:** We are still looking for people to volunteer to demonstrate during the show. In the past, we have had carving, faceting, grinding and bead making. If you would like to demonstrate or know of someone, let Rose know. The public always like to view this sort of thing. Demonstrations will be held in the workshop. ■

BC Society News

Please check the society web site for updates, detail information and more shows and field trips:
www.lapidary.bc.ca

Upcoming Shows

SURREY ROCKHOUND CLUB

Sat. & Sun., Oct. 15 - 16, 2011 10am-5pm
Sullivan Hall, 6302 152 Street, Surrey, BC

Demonstrations, Displays, Dealers,
Hourly Door Prize, Kids Creative Corner
Snack Bar open during the Show, Admission
by donation. For more info contact: Alice
Clarke, 604-584-5592

DELTA ROCKHOUND CLUB

Sat. & Sun., Nov. 5 - 6, 2011 10am-5pm
Annual Gem Show "**Rocks to Gems**"
South Delta Rec Centre, 1720 56th St., Delta
Free tumbled stones to elementary and
younger visitors, Demonstrations, Displays,
Dealers, Snack Bar, Admission by Donation

Bench Tips from Brad Smith

Brad Smith, a jewelry instructor from Santa Monica, California, has been nice enough to contact rock clubs to donate tips to newsletters. This will be an on-going column.

TWISTING WIRES together can be done with an old hand drill but goes much faster with a power tool. My preference is to use a screw gun, although a Dremel or Foredom should do well. Just make a little hook out of coat hanger wire (or use a screw-in cup hook) and chuck it up in your screw gun. Fasten the ends of the wires in a vice and slip the other ends on your hook. Keep a little tension on the wires as you twist.

Note that a power drill is too fast a tool for this unless you have one with a variable speed control.

SMOOTHING EARWIRES - Any time you make your own earwires, the hardest part for me is to sand and polish the end that's inserted into the ear. Any sharp edge there is no fun. I've tried using sanding sticks, cup burs, and silicone polishing wheels. I've tried buffing on a Zam wheel, and I've tried spinning the wire in the Foredom to polish the tip. While all of these techniques do the job, none are very easy or fast.

Then it occurred to me - I could melt the wire smooth. One quick touch in the flame of the propane/oxygen Little Torch does the trick - not enough to form a bead on the wire but just enough to round off the tip.

More BenchTips by Brad Smith are at:
groups.yahoo.com/group/BenchTips or facebook.com/BenchTips ■

Workshop Tips

Cutting

Geodes in the right place can be tricky. Try rolling the geode on a flat floor several times and mark the up side each time. Then cut on a plane parallel with the floor. Crystal growth inside the geode is probably most developed at the top and bottom of its resting position. *from Choo-Choo Chatter, 3-4/04 via Rock Writings 09/04.*



To open geodes, soak a string in kerosene, tie it around the geode. Burn the string, then plunge the geode in cold water. In many cases, this will crack the geode and a light tap with a hammer will finish the job. *Original source unknown from Breccia 06/98 via The Nugget 01/99.* ■

From Fins to Feathers - Amazing Canadian Prehistoric Discoveries

Ancient Toothy Fish Found in Arctic

Photograph by Ted Daeschler/ANSP



Christine Dell'Amore, National Geographic News, Published September 12, 2011

Fossils of a new species of carnivorous fish that prowled ancient rivers have been discovered in the Canadian Arctic, a new study says. The 6-foot-long (1.8-meter-long) *Laccognathus embryi* was “the kind of fish that was waiting to lunge out to grab whatever was in front of it,” said study co-author Ted Daeschler, a vertebrate zoologist at the Academy of Natural Sciences in Philadelphia.

The fish’s 1.5-inch-long (3.8-centimeter-long) fangs would have definitely sunk into flesh, he added. In addition, the 375-million-year-old fish had thick, quarter-size scales; tiny eyes; a flat head; and a wide mouth—sort of like a modern-day grouper.

Daeschler and colleagues found the new fish fossils during several excavations in a siltstone flood deposit on Ellesmere Island in Nunavut, Canada.

Both *Tiktaalik* and *L. embryi* were lobe-finned fish, a group with rounded, limb-like fins. The group was beginning to blink out in the Devonian period, 415 to 360 million years ago—its only surviving members are the “living fossil” fish, the coelacanth, and the lungfish. The new predatory-fish study was published in September in the *Journal of Vertebrate Paleontology*.



An artist's concept of *Laccognathus embryi*. Illustration courtesy Jason Poole, ANSP.

source: http://news.nationalgeographic.com/news/2011/09/110912-ancient-fish-arctic-predator-devonian-fossils-animals-science/?fb_ref=Tm82sQ0kOxA.like&fb_source=home_multiline

Feathers Preserved in Amber Reveal Colorful, 'Fluffy' Dinosaurs



An isolated, unpigmented feather barb and a mite preserved in Canadian Late Cretaceous amber. CREDIT: Science/AAAS

Jennifer Welsh, LiveScience Staff Write Date: 15 Sept. 2011 Time: 11:52 AM ET

About 80 million years ago, the flap of wings in a conifer forest let loose feathers that floated through the air before sticking to globs of shining tree sap below.

Researchers in Western Canada have discovered these slicks of solidified sap, known as amber, contain a great variety of dinosaur and bird feathers from the Late Cretaceous period. They found 11 sets of feathers after screening more than 4,000 amber deposits in different museum collections. The feathers were so well-preserved that the researchers were even able to guess at what colors they might have been. They also contained samples of each of the four stages of feather evolution.

“All the feathers are preserved down to micron scale, showing indentations and pigmentation,” study researcher Ryan McKellar, of the University of Alberta, told LiveScience. “It’s also the first time we’ve found protofeathers [feathers thought to belong to nonavian dinosaurs] preserved in amber.”

The researchers sanded down and polished the amber pieces to just millimeters away from the feathers. This allowed them to get an up-close look at the structures entombed in the amber.

They could see the pigments that once colored the feathers. Many were dark gray or brown in color, while others were clear. The creatures’ colors may have ranged from transparent to mottled and diffuse colors, similar to the many shades of modern birds.

“Not long ago, extinct dinosaurs were considered by most as scaly and dull,” Mark Norell, a researcher at the American Museum of Natural History in New York who wasn’t involved in the study, wrote in a Perspectives article in *Science* this week. “Now, instead of scaly animals portrayed as usually drab creatures, we have solid evidence for a fluffy

colored past.”

The fossil record of this evolution from simple to complex feathers is spotty. Researchers actually have older records of more modern feathers than they do of the simple dinosaur protofeathers. These amber samples show that these dinosaur feathers stuck around until pretty late in dinosaurs’ evolution, possibly up until the beasts went extinct.

His opinion was echoed by several other researchers in the field, who were particularly pleased with the details derived from the amber feathers that allowed the scientists to discern the special adaptations for flight and diving, Zhonghe Zhou, a researcher at the Institute for Vertebrate Paleontology and Paleoanthropology at the Chinese Academy of Sciences, told LiveScience in an email.

Zhou also noted that some of the feathers were more difficult to classify based on type, so scientists can’t really be sure if they are bird or dinosaur feathers, or somewhere in between.

source: Read the entire article and see more photos at: http://news.nationalgeographic.com/news/2011/09/110912-ancient-fish-arctic-predator-devonian-fossils-animals-science/?fb_ref=Tm82sQ0kOxA.like&fb_source=home_multiline



Inspiration comes easy at S&S Studio with their large selection of beading supplies. They are an importer of premium gemstones, pearls and glass beads with a large selection of 14K gold-filled, 925 silver, 925 argentium, copper, brass and stainless steel findings, chains and wires. Also available are Softflex, Swarovski, leather cords, tools, books, jewelry displays, packaging and much more. Beading supplies and artisan jewelry are available retail and wholesale. The front of the store has a fine selection of Canadian made artisan jewelry and if inspiration captures you, they have a number of jewelry classes to help you create something beautiful.

Discount for rock club & lapidary members.

S&S Studio

Beading Supplies & Artisan Jewelry
7-3130 St. Johns St., Port Moody, BC
phone: 604-469-3327

info@ssstudio.org classes@ssstudio.org
www.ssstudio.org

The New Seven Wonders of the World

From Wikipedia, the free encyclopedia

New Seven Wonders of the World was a project that attempted to update the Seven Wonders of the Ancient World concept with a modern list of wonders. A popularity poll was led by Canadian-Swiss Bernard Weber and organized by the Swiss-based, government-controlled New7Wonders Foundation, with winners announced July 7, 2007 in Lisbon.

The New7Wonders Foundation claimed that more than 100 million votes were cast through the Internet or by telephone.



Machu Picchu, Cuzco Region, Peru



Christ the Redeemer, Rio de Janeiro, Brazil



The Giza Pyramid of Egypt, the only remaining Wonder of the Ancient World, was granted an honorary site.

Here are the new seven wonders:



Taj Mahal, Agra, India



Chichen Itza, Yucatan, Mexico



Great Wall of China, People's Republic of China



Petra, Ma'an Governorate, Jordan



Colosseum, Rome, Italy



Lady Em's Gems

creations by Emilie Jefferson

Beautiful jewellery using unique beads and hand worked stones.

- **Beginners Wire Wrap Cabochon Course**
- **NEW: Viking Knit Courses**

Go home with a finished piece

Please contact me for course prices & details

Phone Emilie: 604-931-6616

Email: ejefferson@shaw.ca

NEW!

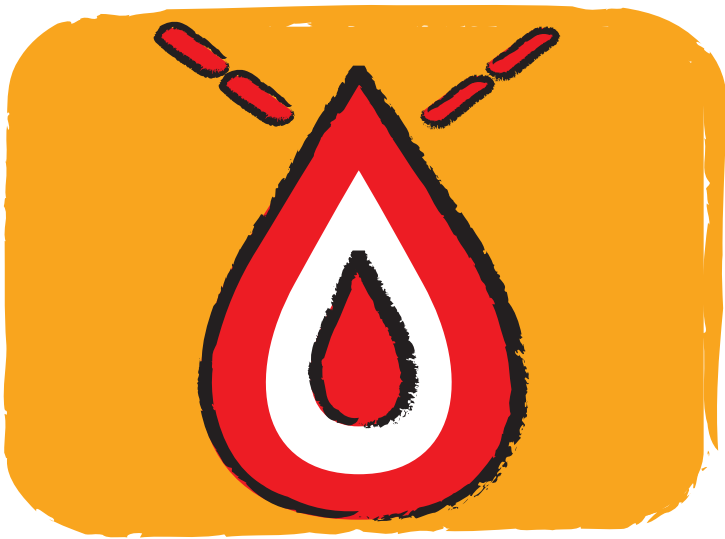
Viking Knit Bracelet courses



French Quarters Bed & Breakfast

213 Laval St., Coquitlam, BC V3K 4W2

Voice: 604-931-6616 Fax: 604-939-3663 www.frenchquartersbb.com



port moody rock + gem presents

ROCKtoberfest!

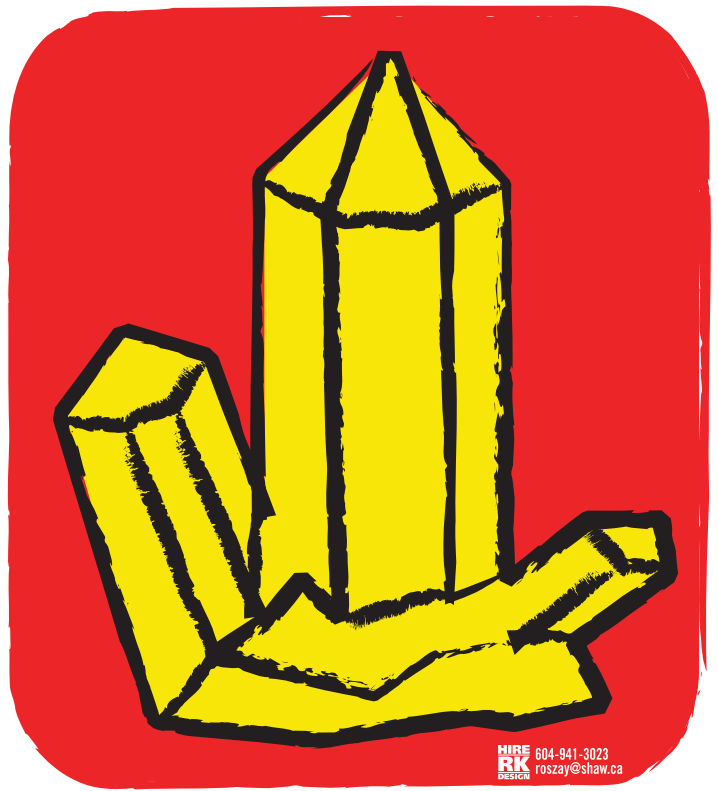
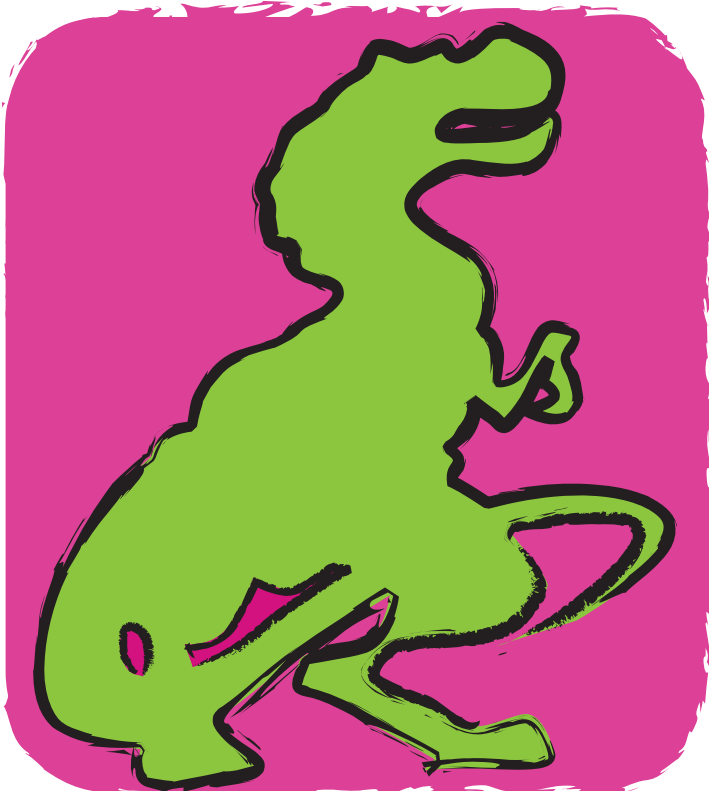
a celebration of everything mineral

10am - 5pm
Sat+Sun 2011

Oct. 29 & 30 • Port Moody

125 Kyle St.
Kyle Centre

displays~demonstrations~handcrafted items~childrens activities~dealers tables~slabs
crystals~fossils~members boutique~beads~door prizes~great food~craft supplies



HIRE
604-941-3023
roszay@shaw.ca

www.portmoodyrockclub.com