



Port Moody Rock & Gem Club
presents

The

SECRET

Life of Stones

The 2010 Annual Show

The Port Moody Rock & Gem club is pleased to present our 2010 Rock Show. The club works year round to come up with new ideas, interesting displays, beautiful jewellery, and fun things for the kids. We hold work bees for prizes and meetings for organization and promotion. A lot goes on in the background to produce 2 busy days of rock-related show and tell.

This year's theme is The Secret Life of Stones. What does this mean?

We are surrounded by the earth and its materials, yet, for most of us, we are oblivious how important they are in human history, our present way of life, and what they mean to us. There are so many things about rocks and minerals that are weird, wonderful and useful that we are unaware of.

That's what this years show is presenting: the physical, emotional and spiritual rela-

tionship between rocks and mankind. From the past (Why is the Virgin Mary's clothes painted blue?), to the present (The importance of mining for minerals to the Canadian economy). From the practical, (Why you might not want to wear turquoise jewellery in the bath), to the spiritual (Why did the Chinese emperors wear jade burial suits?).

These issues are covered in the theme displays. Elsewhere at the show are activities for children, demonstrations on working with stones, vendors with rough and finished rock, specimens, books and many handcrafted items for sale.

A related month-long display is at the Port Moody Library. It shows the research that went on to produce this year's theme. So, if you miss the show, take a look at the thought process - presented in an unconventional way. ■

Harrison Garnet Field Trip

article and photos by Lisete



The trip to Harrison was a very well attended outing put together by the BC Lapidary Society May 2nd. It was a rather rainy day, but that never seems to bother any rockhounder :-)

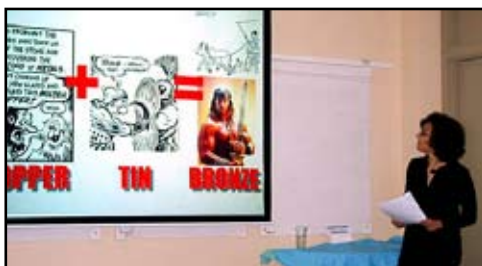
We were looking for garnets and pyrite in quartz. In this trip we hardly had to walk... although we did quite a bit of driving... but, the garnets were just sitting on the side of the road. And some of them were in very large specimens too! The garnets were found in various sizes, from tiny to about 1 inch, but very poor quality. These were good for specimens only.

These outings are not just for the rocks. They are also for getting together with folks that share the same interests. And also for enjoying some breath taking sceneries.

continued on page 3



Rose & Lisete starting the presentation



Lisete looking at Arnie representing the development of bronze

Rapt Interest at Reading Rocks

Lisete and Rose show youngsters that rocks aren't dull

How do you entertain a room full of excitable 8 to 12 year olds? Rose Kapp and Lisete Cerqueira rose to the challenge this summer at the Port Moody Library Reading Rocks! Summer Reading Club.

The two lapidary ladies presented a 20 minute tag-team PowerPoint slide show twice this summer, filled with witty comments, colourful photos and educational information. It was followed by a mini display of stone samples from around the world and 3 hands-on stations.

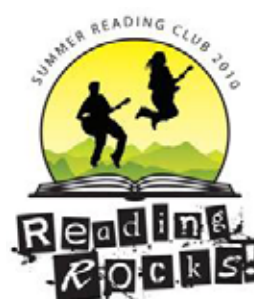
The children were welcomed to stack stones, shape soapstone, pick up pumice, rub rocks and caress crystals. Many curious questions were answered and even the parents were intrigued by the diversity of the samples shown.

The library staff were very helpful setting up the room, conducting the children and keeping

the peace so the session could run smoothly. The happy children left with colouring pages, a polished rock sample and a handbill announcing the upcoming fall rock show.

Over 50 children and their parents are sure not to think rocks boring after the entertaining and informative presentation from the Port Moody Rock & Gem Club. Thanks to Andrew

for rock samples (including the dino poo - big hit with many e-yews"), Lisete and Rose for being a willing presenters, Susanah Summers-Cooke as assistant, and Tom for helping supply club samples. ■



Port Moody Rock & Gem Club Quarterly News
The Planet Earth Post

www.portmoodyrockclub.com

The Planet Earth Post is published 4 times per year by the Port Moody Rock & Gem Club.

President: Lisa Elser

Vice president: Lisete Cerqueira

Secretary: Edit Simon

Treasurer: Marlene Flanagan

Membership: Sonja Stubbings

Workshop: Geoff Cameron, Andrew Danneffel, Shirley Edwards, Bill McCracken, Tom Schlegel, Richard Wile

Newsletter: Rose Kapp

Society Delegates: Gary Richards (Sr.),

Lisa Elser (Int.), Ken Ayres (Jr.)

Workshop Schedule September to June. Please check with the Kyle Centre for other months.

Monday: Lapidary 8:30 am - 12 noon

Tuesday: Lapidary 7:00 pm - 9:45 pm

Thursday: Lapidary 8:30 am - 12 noon

General Meetings are held in the Arts Centre on St. Johns St., Port Moody, at 7 PM.

For Field Trips, Rock Shows and special events in British Columbia, please check the BC Society website: www.lapidary.bc.ca

Planet Earth Post Advertising

The Planet Earth Post is accepting advertising. The quarterly publication of the Port Moody Rock and Gem Club contains articles about club activities, lapidary news and tips, geological and other earth science articles.

Our full colour newsletter is available online through the club website. We have over 250 people on our contact list.

Edition and Distribution Dates:

Winter - early January

Spring - late March (Society Show edition)

Summer - early July

Fall - early October (PMRC Show edition)

Contact Rose Kapp (editor) if you wish to receive a rate card or to place an ad.
ph: 604-941-3023 • email: roszay@shaw.ca

2010-11 Club Membership

Membership fees for the term of September 1, 2010 - August 30, 2011 are due. Single membership is \$25. Family memberships are \$45 (for an immediate family of up to two adults). For family memberships including more than two adults, additional adults will need to pay the \$25 individual rate.

Membership fees can be submitted at our next general meeting, workshop or mailed to the club at: Port Moody Rock & Gem Club, c/o Kyle Centre, 125 Kyle St., Port Moody, BC, V3H 2N6

Editor's Notes

Greetings everyone! Welcome to the fall edition of The Planet Earth Post. This edition comes out just as our club holds its annual gem & mineral show. It's a good time to present our club's benefits to potential members and to showcase some of our activities. Plus, like usual, I like to highlight some news-worthy rock-related articles from around the world and right in our backyard that you might have missed in the regular media.

I also thought it was a good time to go over some of the club's protocols on the workshop machinery. Better knowledge produces better quality work. I asked some members for a couple of workshop tips

which were gladly given. I hope to have more in future issues. An article on adhesives for lapidary is in the future too. Anyone have a favourite? Please let me know.

Field trips seem to be a popular activity so it was great when Lisete sent a photo essay on the Harrison garnet expedition from the spring. This issue also has some practical advice on one of the hazards of being in the wilds - ticks.

Paid your membership dues? Better open that wallet and do so or Sonja will be hounding you. Plus, its time to get ready for our annual show. Lisete and her show team have been working all summer and many prizes have been created during a number of work bees. Remember, many hands make light work. Making our show a continued success helps keep our workshop operating expenses paid so we don't have to pay a workshop user fee or higher membership dues.

As soon as this show packs up, we will be planning the next. We will be looking for new ideas, a great theme, and anything else that will create an exciting event for 2011. We are a very active club with lots of talented and knowledgeable members. Keep up the help.

Many thanks to all who help produce this newsletter by contributing articles, leads and ads. Cheers to you all!

Rose Kapp, editor

Smile Time



Paleontologist Pranks

POLISHING CONSUMABLES
FOR FACETERS



BETA DIAMOND PRODUCTS, INC.

TEL : (714) 777-7144 www.betadiamond.com FAX : (714) 693-9351



Christine Laurin, looks happy enough . I wonder what kind of "goods" she found?!



There is always time to contemplate. I wonder if he realized he was almost standing on top of some quartz with pyrite.



One of our Wagon Masters, from the Port Moody Rock and Gem Club, Emma Turgeon.



Another short stop, at the water fall. Thank you for your patience Lynne :-)

below: Overlooking Harrison Lake

Rock Hunting Fieldtrips

Ah, the discovery of a great piece of stone found in the field, there's nothing like it. But where are these wonderful places to find specimens and workable rock? That's the job of our intrepid wagon masters. The Port Moody club plans a few day trips in the area. If you are a club member and on our mailing list, we will send you updates.

It's best to be a member of a group before heading out to the field. Don't go alone. Going with experienced rockhounds helps to prevent accidents and aids in finding good hunting areas. Be aware there are many locations that are now inaccessible for collecting.

The BC Lapidary Society has many more hunts further afield. Check the Society website for updates: <http://www.lapidary.bc.ca>. Summer Camp 2011 will be on Texada Island. Please remember, you must be a paid member of a BC rock club to join on a hunt.

Canadian rockhounds in good standing with their clubs are invited to join field trips in Washington. Washington State Mineral Council: <http://www.mineralcouncil.org>



Inspiration comes easy at S&S Studio with their large selection of beading supplies. They are an importer of premium gemstones, pearls and glass beads with a large selection of 14K gold-filled, 925 silver, 925 argentium, copper, brass and stainless steel findings, chains and wires. Also available are Softflex, Swarovski, leather cords, tools, books, jewelry displays, packaging and much more. Beading supplies and artisan jewelry are available retail and wholesale. The front of the store has a fine selection of Canadian made artisan jewelry and if inspiration captures you, they have a number of jewelry classes to help you create something beautiful.

Discount for rock club & lapidary members.

S&S Studio

Beading Supplies & Artisan Jewelry
7-3130 St. Johns St., Port Moody, BC
phone: 604-469-3327

info@ssstudio.org classes@ssstudio.org
www.ssstudio.org

Dinosaur graveyard found in northern B.C.

(Condensed) By Dirk Meissner, The Canadian Press via <http://ca.news.yahoo.com>

VICTORIA, Sun Oct 3, 6:00 AM - You might call it a paleontologists' playground. A team of researchers has discovered a field of untouched fossilized dinosaur remains near Tumbler Ridge, B.C., proving that giant plant- and meat-eating prehistoric animals roamed northeastern British Columbia millions of years ago.

But the elation over the dramatic discovery — much of which was just sitting on the surface — is dampened by the provincial government's Stone Age attitude toward protecting and promoting heritage lands, artifacts and projects.

Paleontologist Richard McCrea and his research team made the discovery last month during a three-day expedition into a remote forested area in B.C.'s Peace River area. The results were promising, McCrea said, with up to 150 kilograms of fossilized dinosaur remains found on the surface, there was no digging required.

"We have bones from plant-eating dinosaurs and we have some bones from large meat-eating dinosaurs, probably a tyrannosaur," he said. "We did a sweep and the indications are pretty good we probably have quite a lot of bones in that area," said McCrea. "We could possibly start two excavations in two widely separated areas we had explored. Things look promising."

But McCrea doesn't want to reveal too many details about his discovery, because BC has no laws that protect such finds. He often identifies himself as a geologist looking for coal seams when he comes across other hikers, over concerns they could damage or take advantage of a sensitive fossil area.

"This is the only province in the country with a substantial paleontological heritage that does not have legislation, does not support institutions or projects," McCrea said. "Essentially, British Columbia has no infrastructure for handling this at all."

McCrea — who has lobbied the government to introduce protection legislation similar to Alberta's heritage law which includes fines and jail terms — said the B.C. government doesn't want to spend the money and doesn't want to deter potential resource investors.

B.C. Agriculture and Lands Minister Steve Thomson said the province has recently completed a public consultation process examining the management of fossil sites.

"The province is working towards closing the regulatory gap on managing B.C.'s



*A Hadrosaur (duck-billed dinosaur), a typical plant-eating dinosaur
(image from en.wikipedia.org)*

fossils," said Thomson in a statement to The Canadian Press. "We're aware that British Columbians want measures in place that balance social, environmental and economic values of fossils when land use decisions are made."

Thomson's statement said his ministry is working with agencies, stakeholders and the academic community to identify the elements needed for management of B.C.'s fossil heritage. A report on the fossil management framework will soon be posted to the Ministry's website, but no date is provided.

McCrea, who has been part of the fossil management process, said BC must do more to protect and preserve its large and yet undiscovered fossil reserves. "British Columbia has a massive paleontological heritage," he said. "It's fairly widely recognized and it's pretty well known, except in British Columbia."

University of Victoria history Prof. John Lutz said BC lags behind much of Canada when it comes to heritage protection.

He was part of a group representing heritage academics and organizations, museums and archivists that discussed drafting a B.C. heritage policy five years ago. The group said the province needs legislation to protect fossils, landscapes and sacred sites, and must develop policy to deal with cultural and heritage property, but little has been done, he said.

It led Lutz to speculate the B.C. government doesn't want to spend the money on heritage protection and fears antagonizing potential investors.

"We are on the cheap side when it comes to that, and I think our government is still of the



*Paleontologist Richard McCrea
(photo by Joan Zimmer, 2002)*

mentality that small government is better and that left to its own resources the free market will take care of things that are important," said Lutz.

But he said heritage legislation has two huge benefits: it protects cultural history and is good for business because it promotes tourism.

The Tumbler Ridge area's member of the legislature agrees that heritage, especially dinosaurs, are good for tourism.

The Peace Region's Paleontology Research Centre, a decommissioned elementary school turned museum, offers a world-class dinosaur exhibits with bones gathered from the Tumbler Ridge area, said Blair Lekstrom, and MLA and former Liberal cabinet minister.

"The work they are doing is amazing," Lekstrom said. "Not only for Tumbler Ridge and the Peace region, but our entire province." He said heritage protection is an important part of B.C.'s economic future.

McCrea said he's on the verge of helping unearth a major fossil dinosaur find in what amounts to his backyard, but a slow-moving government is restricting a potential cultural and economic windfall.

"We're picking up the slack," he said. "We have this amateur volunteer organization that's taken on what should be a provincial responsibility and we're doing a damn good job with the few resources we have."

Thanks to Tom for alerting me about this article. - editor

Saw Bites



Lynne's smiling here, but there were some anxious moments when Lynne cut her thumb on the notched trim saw blade Thursday, Sept. 2. Lisete was there to perform first aid and Emma escorted Lynne to a nearby doctor's office for bandaging. No stitches were necessary.

This is an example of accidents that can happen in the workshop. No one plans to get hurt. Please be careful of the equipment and everyone's safety.

With this accident in mind, the workshop participants thought it was a good time to go over some of the precautions in working in the shop.

Protective goggles, face shields and waterproof aprons are available. Wear close-toed shoes and refrain from wearing loose clothing and accessories. Tie long hair back. Be careful when moving around the shop that you don't bump into others. Refrain from shouting and causing distractions.

And when something happens, the red first aid bag is located in the upper cabinets by the polishing wheels. ■

Workshop Rules & Regulations

The following is a condensed version of the 2008 rules & regs for the workshop. A complete version is available in the shop and copies will be made for new members' packages. All members should review it for their own safety. The club is in the process of updating this information. Plus there are some excellent tips on how to get the best results on various machines. Knowledge is power!

GENERAL PROTOCOL

- Members in Good Standing shall be permitted to participate in the Lapidary Workshops during designated hours.
- Non-Members (guests) shall be permitted to participate in two Lapidary Workshops during designated hours prior to being required to officially join the club and pay the applicable membership fee. (*editor's note: The club now has a waver members need to sign before working on the equipment.*)
- Lapidary Workshop participants shall be required to sign the attendance book prior to using the Lapidary Equipment.
- Workshop Supervisors and Assistant Supervisors shall be in complete charge of the Lapidary Workshop and shall advise and direct the use of the Lapidary Equipment. The Supervisors shall have the right to refuse use of the equipment at their discretion.
- The Lapidary Equipment used during a Lapidary Workshop shall only be turned on once a Workshop Supervisor or Assistant Supervisor is present.
- All children under the age of 12 shall be required to be supervised by an adult family

member at all times while using the Lapidary Equipment.

- Lapidary Workshop participants shall not excessively use the Lapidary Equipment for commercial purposes. While the club welcomes the sale of members' work at our annual show, the Lapidary Equipment is made available for personal and hobby use.
- Lapidary Equipment shall be cleaned after each Lapidary Workshop. All participants shall assist with cleaning.

GENERAL SAFETY

- Participants shall wear eye protection at all times when using the Lapidary Equipment. Safety goggles shall be made available for use.
- Participants shall tie back long hair ensuring it is kept at a safe distance from the Lapidary Equipment.
- Participants shall not be under the influence of drugs, alcohol, or any other mind altering substance when using the Lapidary Equipment.
- Participants shall receive an orientation by a Supervisor or Assistant Supervisor on the proper and safe use of the Lapidary Equipment prior to its use. A booklet shall be made available discussing the proper usage of all Lapidary Equipment.
- The Lapidary Equipment shall not be used in conjunction with any of the following potentially toxic materials: shell, bone, antler, malachite, cinnabar, any other known toxic material.

SLAB SAWS

Slab saws are used to cut rocks into slices or

continued on page 6



www.ladyemsgems.com

Lady Em's Gems

creations by Emilie Jefferson

Beautiful jewellery using unique beads and hand worked stones.
Visit us at www.ladyemsgems.com to see more designs.

Beginners Wire Wrapping Courses Available

Go home with a finished piece

\$100 for private session • \$75 per person for group rate

Price includes supplies, including sterling silver

Please contact me for details: Emilie 604-931-6616

www.ladyemsgems.com • Email: info@ladyemsgems.com



French Quarters
Bed & Breakfast

213 Laval St., Coquitlam, BC V3K 4W2
Voice: 604-931-6616 Fax: 604-939-3663
www.frenchquartersbb.com

workshop rules & guidelines continued...

slabs. The resulting slabs can be polished as display specimens or used to create cabochons. Our workshop contains a 10 inch, 14 inch, and 18 inch slab saw. All non-honorary members are required to pay a fee of 15 cents per square inch for using the slabbing saws. Fees are payable to the workshop supervisor. Always obtain the permission and approval of a workshop supervisor before turning the saw on. The workshop supervisor will double-check the setup.

Diamond Grinding Wheels

Diamond wheels are **finesse wheels** and should only be used to grind and polish cabochons and small stones.

Diamond wheels are generally always true, but they do slowly wear away with time. **Diamond wheels are costly** and should always be used carefully to maximize their lifespan. Always move the rock across the entire surface of the wheel to avoid wearing out the centre of the wheel prematurely.

Rules:

- Only members who have been authorized by the shop supervisor may use the grinding wheels. We require all members to have a one-on-one orientation with this equipment before using it. Ask the workshop supervisor for this orientation if not yet received.
- Only cabochons, small stones, and projects as approved by the supervisor may be worked on using the diamond wheels.
- Always ensure sufficient water is being provided to the wheel. Insufficient water will cause dust to form and wear the wheels more quickly. Always set up a splash pump and ensure the splash makes contact with the wheel at all times.
- Apply moderate pressure when using the 80 and 200 grit grinding wheels. Pushing too hard will wear away the wheels unnecessarily.
- Work across the entire wheel, providing equal wear to the grinding surface.
- Work no longer than 5 minutes on the 600 grit sanding wheels. If the required result has not been reached, go back to the previous grit.
- Work no longer than 3 minutes on the 1,200, 3,000, 14,000, or 50,000 grit sanding and polishing wheels. If the required result has not been reached, go back to the previous grit.
- Children under 12, using a grinding or sanding wheel, must be under the direct supervision of an adult family member at all times.

For more information and tips about the trim saws, Freedom, flat laps, buffing and dopping, check the Workshop Rules & Guidelines booklet, available in the workshop.

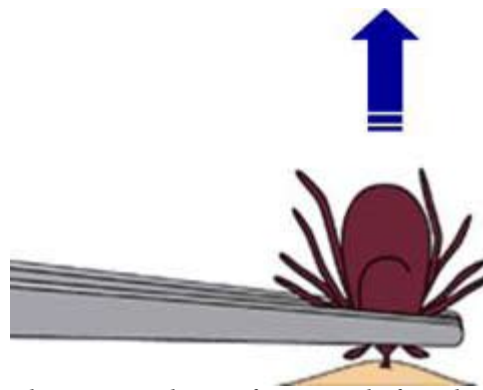
Tick Safety

Sometimes we rockhounds leave the relative safety of our workshops to venture out into the wild world. We are looking for rocks but sometimes pick up things we shouldn't. These items could be ticks.

According to the CDC there are several diseases that are spread by ticks including, Babesiosis, Ehrlichiosis, Lyme Disease, Rocky Mountain Spotted Fever, Southern Tick-Associated Rash Illness, Tick-Borne Relapsing Fever and Tularemia.

TIPS FOR PREVENTION

Wear a bug repellent containing DEET, be sure to follow the instructions on the bottle very carefully! Wear long pants and sleeves when you're going to be in forested areas. Tuck your pant legs into your socks to keep ticks out of your jeans.



The proper technique for removal of a tick. (U.S. CDC)

SAFE REMOVAL OF TICKS

Use a small pair of curved forceps or tweezers. Wear some sort of hand protection such as gloves so you don't spread pathogens from the tick to your hands.

Using the tweezers, carefully flip the tick over onto its back. Grasp the tick firmly with the tweezers as close to the skin as possible. Apply gentle pulling until the tick comes free. Twisting or turning the tick

does not make removal easier because the mouthparts are barbed; in fact, such actions may break off the head and mouthparts, thereby increasing the chances for infection.

Once removed, don't crush the tick because you may transmit disease. Rinse it down a sink or flush it down a toilet. Consider keeping it in a tightly closed jar or taped to a piece of paper. Show the tick to the doctor if you become ill from the tick bite.

The area of the bite should leave a small crater or indentation where the head and mouthparts were embedded. If portions of the head or mouthparts remain, they should be removed by a doctor.

Thoroughly cleanse the bite area with soap and water or a mild disinfectant. Observe the area for several days for development of a reaction to the bite, such as a rash or signs of infection. Apply first-aid antibiotic cream to the area. Application of an antibiotic to the area may help prevent a local infection but usually does not affect the chance of developing diseases transmitted by the tick.

Remember to wash hands thoroughly after handling any tick or instruments that touched a tick. Clean and disinfect any instruments that were used.

MYTH: Burn a tick to remove it ~ Never try to burn a tick to remove it, this action causes the tick to panic and vomit the blood it has consumed back into the body, increasing the likelihood of infection.

MYTH: Put petroleum jelly on a tick to suffocate it ~ Don't coat a tick with petroleum jelly! Since ticks breathe once every 5 hours or so, petroleum jelly won't kill the tick. Putting petroleum jelly on a tick also runs the danger of irritating the tick, causing it to vomit disease back into the host's bloodstream.

Workshop Tips & Ideas

Our club members have some innovative ideas for some of the problems in working with stone. Here are a few of them:

- This one is from Shirley. Got an old deck of cards? They are great for cutting patterns and templates for new designs. The rigid, plasticized material keeps its shape and doesn't deteriorate even after many uses.
- Emma has been seen using duct tape in a new way. She makes a 'T' shape with it by folding it on itself at the stem and spreading out the top which then adheres to the back of an unfinished cab. She finds this a handy way to hold a stone for flat lapping.

- Rose has started an idea binder in the shop. We hope to fill it with clever jewellery designs, different craft ideas, and inspirations for all of us. If you have seen something new or different, bring it to the shop and we'll add it to the collection.

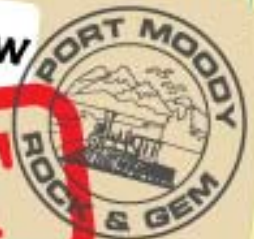
- When working on a cab, use a black, waterproof felt pen to mark scratches that need to be removed. It will be easier to see when the stone is wet.

- Here's a tip for all you new members, especially the ladies: don't invest in a manicure before you take up lapidary. The grindstones will re-shape your fingernails in ways you can't imagine!

The
Port Moody Rock & Gem Club
presents

follow these
links:
- www.portmoodyrockclub.com
- www.lapidary.bc.ca

The 2010 Annual Gem & Mineral Show



The

SECRET

Life of Stones

"A fascinating account of the physical, emotional, and spiritual relations between rocks and man."

Saturday, October 23 & Sunday, October 24
10 am to 5 pm on both days

Kyle Centre, 125 Kyle Street, Port Moody
- right behind the Arts Centre -

a family-fun event • entry by donation

For more information check: www.portmoodyrockclub.com or www.lapidary.bc.ca